

Thermal alarm

8 programmable threshold probes

For each probe, SET up from 0°C to 100°C
Acquiring range: from -10°C to 110°C

TM-2 for....

Components warming in electric boards monitoring

TM-2 for....

MONITORING performance reduction due to termic derating effect on components

Successfully applicable for:

Command / Braking Solenoids:

It avoids insulating losses and mechanic failures

Fuse- links:

It warns on fuse element overheating, which causes nominal current thermal derating

Power alimentation bars:

It prevents uncontrolled connection overheating, which causes insulating corruption

NEED OVERHEATING ALARM SOLUTIONS ? GET TM-2 !

Installation:

Inside electric boards
on Din/Omega bars

Acquisition: from NTC probes

- protected inputs until 70 Vdc
- prealarm/alarm warning leds
- supply: 48 Vdc (32÷70Vdc)
24 Vdc (18÷36Vdc)

Parameter programming

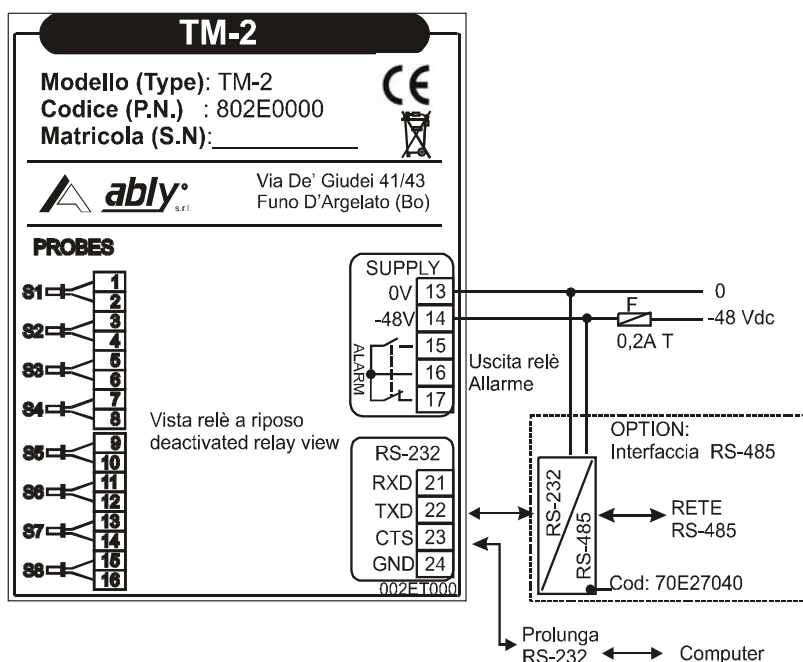
Using TM-2 Utility program
for Windows based systems



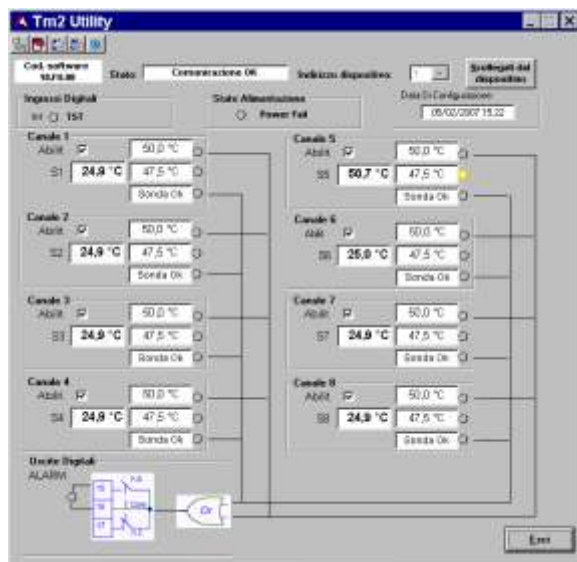
Temperature Probes:
quickly applicable on bars,
using clips or screws



TM-2 Electrical wiring



TM-2 Utility Program



TM-2 Utility program run on PC that is serially linked with TM-2 allows to:

- monitoring the working process
- data Upload (from TM-2 to PC)
- data Download (from PC to TM-2)
- data off-line modification

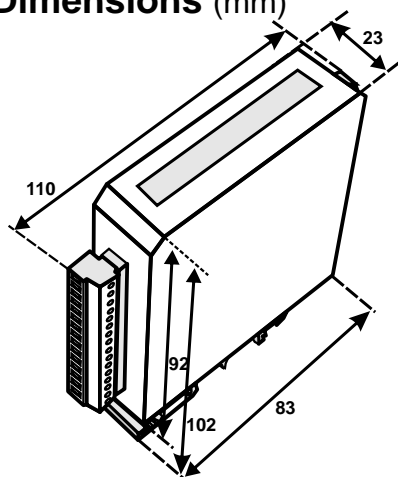
Technical features

	48V version	24V version
Supply voltage	48 Vdc	24 Vdc
[MIN. ÷ MAX.]	[32 Vdc ÷ 70 Vdc]	[18 Vdc ÷ 36 Vdc]
Supply power:	1,2 W	
Isolamento	1Kv dc	
Others:	inverted polarity supply protected	
Acquiring range:	-10°C ÷ 110°C; Short/ Open diagnosis probes	
Resolution	0,1°C	
Precision	best 0,6°C	
Relay output	SPDT relay, 0,4A @ 60Vdc (cos-φ=1)	
Serial I/O	RS-232, with RTS signal	
Temperature	0°C ÷ 70°C (working) -20°C ÷ 85°C (storing)	
Protections	IP30	

CE Conformities

Immunity Standard EN 50082-2, 1995 (Industrial environment)
EN 1000-4-2; EN 1000-4-3; EN 1000-4-4; EN 1000-4-5; EN 1000-4-6; EN 1000-4-11
Emission Standard EN 50081-1, 1997 (Residential, Commercial and Light Industrial)
CISPR 22 Class B

Dimensions (mm)



Ordering codes

Codice	Descrizione
802E0000	TM-2 thermal alarm for 8 ntc probes supply 48 Vdc
802E0010	TM-2 thermal alarm for 8 ntc probes supply 24 Vdc
42000010	Hairpin Ntc 10K probe cable 3,5mt Lg
42000020	Clip Ntc 10K probe cable 3,5mt Lg
TUTLTM2A	TM-2 Utility, application for MS Windows based systems
60P330L0	RS-232 serial extension cable to link TM-2 -PC (Db9)
40000270	USB-RS-232 adapter (non insulated)
70E27040	RS232/ RS485 converter, supply 24Vdc
70E27050	RS232/ RS485 converter, supply 48Vdc



Aby s.r.l. 40050 Funo di Argelato (Bologna) ITALY
Via de' Giudei 41/43
Tel: +39 (051) 860064; Fax: +39 (051) 860074

e-mail: aby@aby.it
web: http://www.abby.it

AZIENDA CON SISTEMA QUALITÀ
CERTIFICATO DA DNV
UNI EN ISO 9001/2000